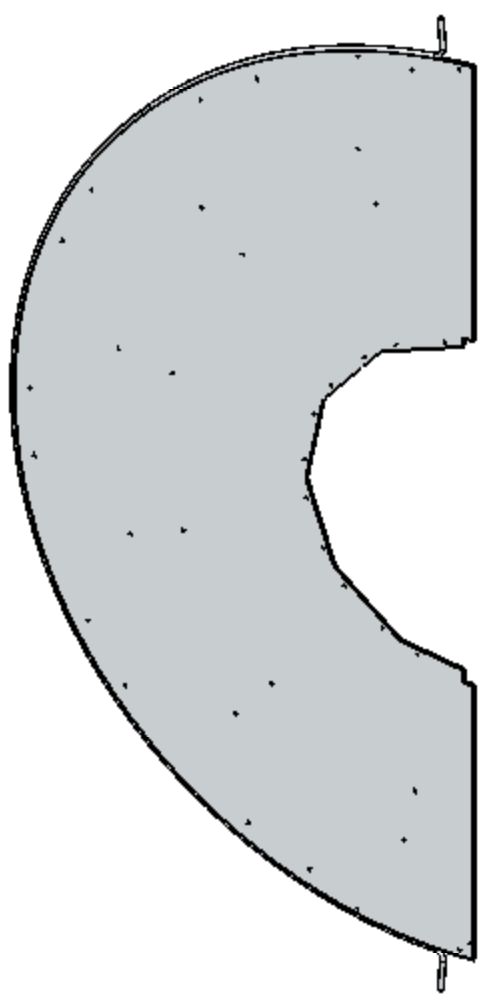
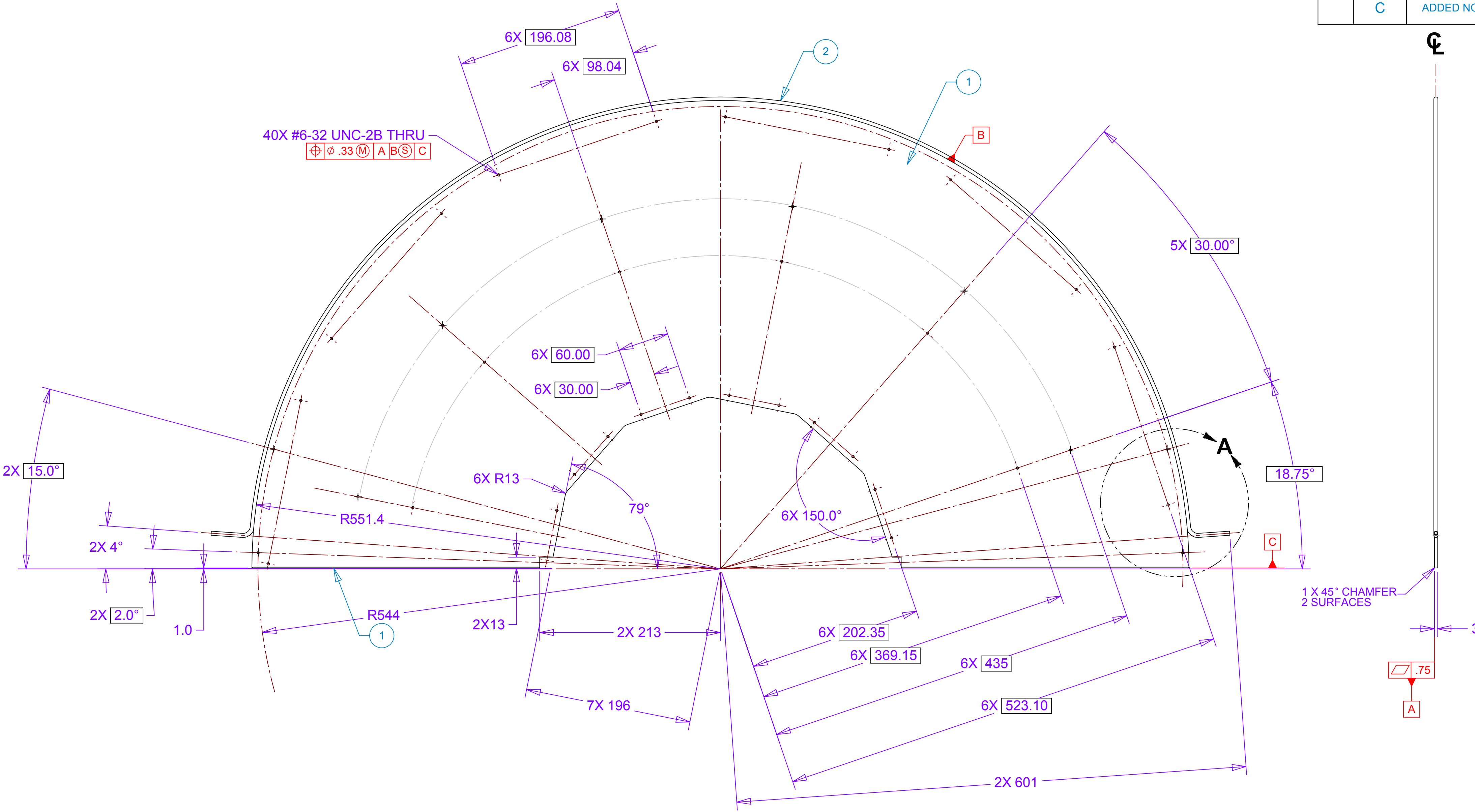


8 7 6 5 4 3 2 1

REVISIONS			
REV.	DESCRIPTION	DATE	APPROVED
A	MODIFIED OUTER DIA. AND MOUNT FOR NEW ROC CARD	3/15/11	WALT
B	ADDED RADIAL DIMENSION FOR HOLES (2)	4/21/11	WALT
C	ADDED NOTCH INNER RADIUS, CLEAR CAGE	7/22/11	WALT



NOTES: UNLESS OTHER WISE SPECIFIED

1. ALL DIMENSIONS IN MILLIMETERS
2. DIMENSIONS AND TOLERANCING PER ASME Y14.5M-1994
3. SURFACE TEXTURE PER ANSI/ASME B 46.1-1985
4. REMOVE ALL BURRS AND BREAK SHARP EDGES TO A MAXIMUM OF .4
5. ALL INSIDE CORNERS TO BE .4 RADIUS MAX
6. COUNTERSINK 82 DEGREES ALL TAPPED HOLES TO MAJOR DIAMETER
7. COUNTERSINK 82 DEGREES APPROXIMATELY .08/1.5 DEEP ALL DRILLED HOLES
8. PARTS TO BE THOROUGHLY CLEANED TO REMOVE ALL OIL, GREASE, DIRT AND CHIPS
9. PART NUMBER (DRAWING NO., DASH NO., REVISION NO., SERIAL NO.) TO BE CLEARLY MARKED ON THE PACKAGING, TAG OR PART ITSELF.

PARTS LIST				
ITEM NO.	QTY.	PART NO.	DESCRIPTION	MATERIAL
1	1		Aluminum Plate, 1/8" Thick	Aluminum 6951-T6 (Preferred) or 6061-T6 (Alternate)
2	1		Bigwheel plate cooling tube 3/16"OD X .028" wall	Aluminum 6951-T6 (Preferred) or 6061-T6 (Alternate)

UNLESS OTHERWISE SPECIFIED:
DIMENSIONS ARE IN MILLIMETERS
-TOLERANCES-

DECIMALS: X = +/- .5, .X = +/- .30, .XX = +/- .15, .XXX = +/- .01, .XXX = +/- .001

ANGULAR: .X = +/- .30, .XX = +/- .15

SURFACE FINISH = 250

HYTEC, INC

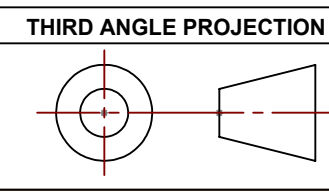
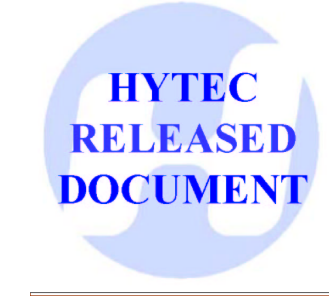
TITLE: PHENIX CENTRAL UPGRADE FVTX BIGWHEEL PLATE ASSEMBLY

DWG. NO. 111-PHX-02-2203C D

SCALE: 1:3

CAD GENERATED DRAWING. DO NOT MANUALLY UPDATE. DO NOT SCALE DRAWING.

DESIGNER	SIGNATURE	DATE
Drawn	Roger L. Smith	3/19/2009
Checked	Walt Sondheim	5/27/2010
Engineer	RJ Ponchione	3/19/2009
Approved	Walt Sondheim	5/27/2010



THIS DOCUMENT CONTAINS INFORMATION THAT IS THE PROPRIETARY PROPERTY OF HYTEC, INC. REPRODUCTION, DISCLOSURE, OR RELEASE TO OTHERS, MANUALLY OR ELECTRONICALLY, IS STRICTLY PROHIBITED WITHOUT THE PRIOR WRITTEN CONSENT OF HYTEC, INC.

8 7 6 5 4 3 2 1

8 7 6 5 4 3 2 1

D

D

C

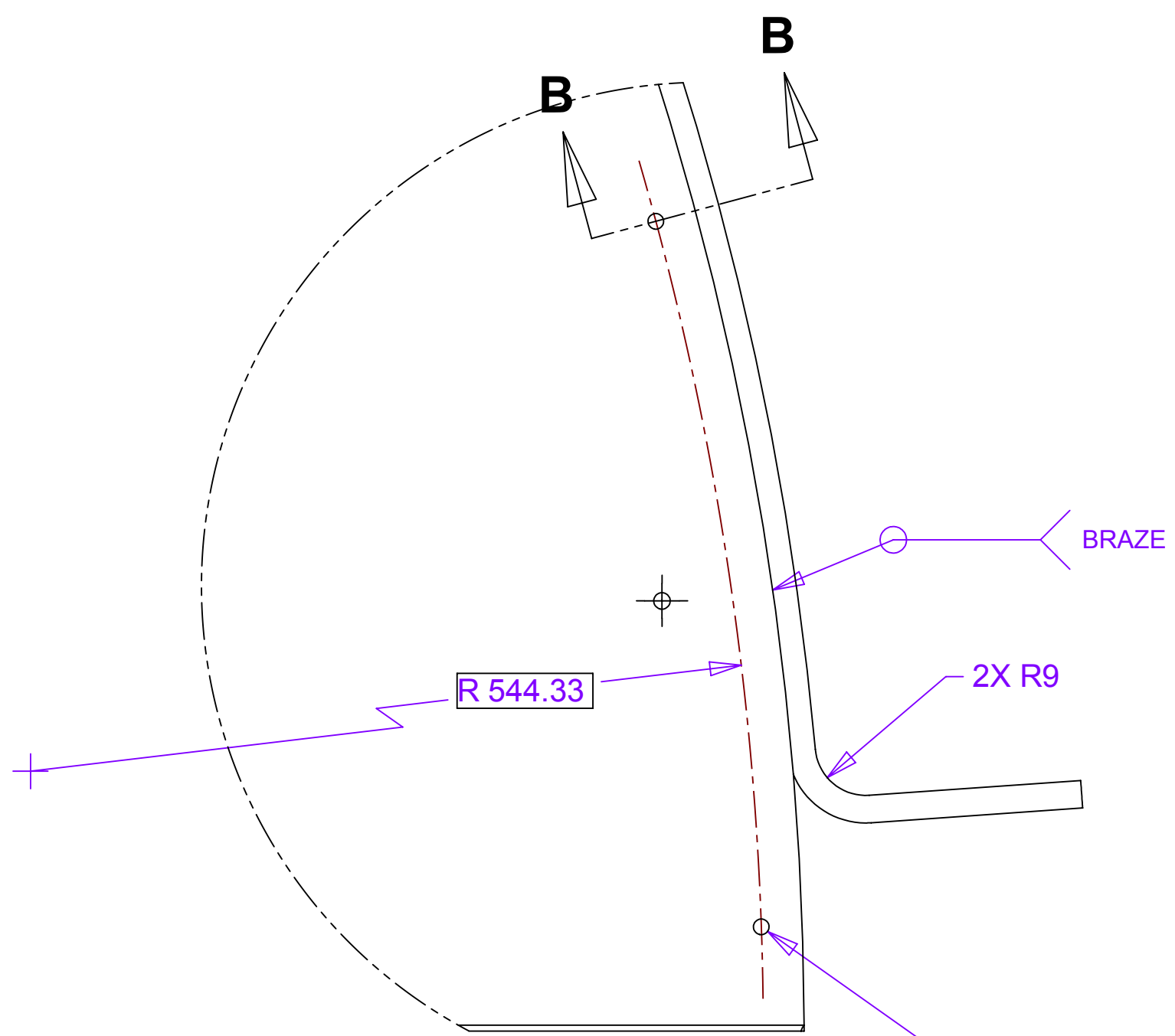
C

B

B

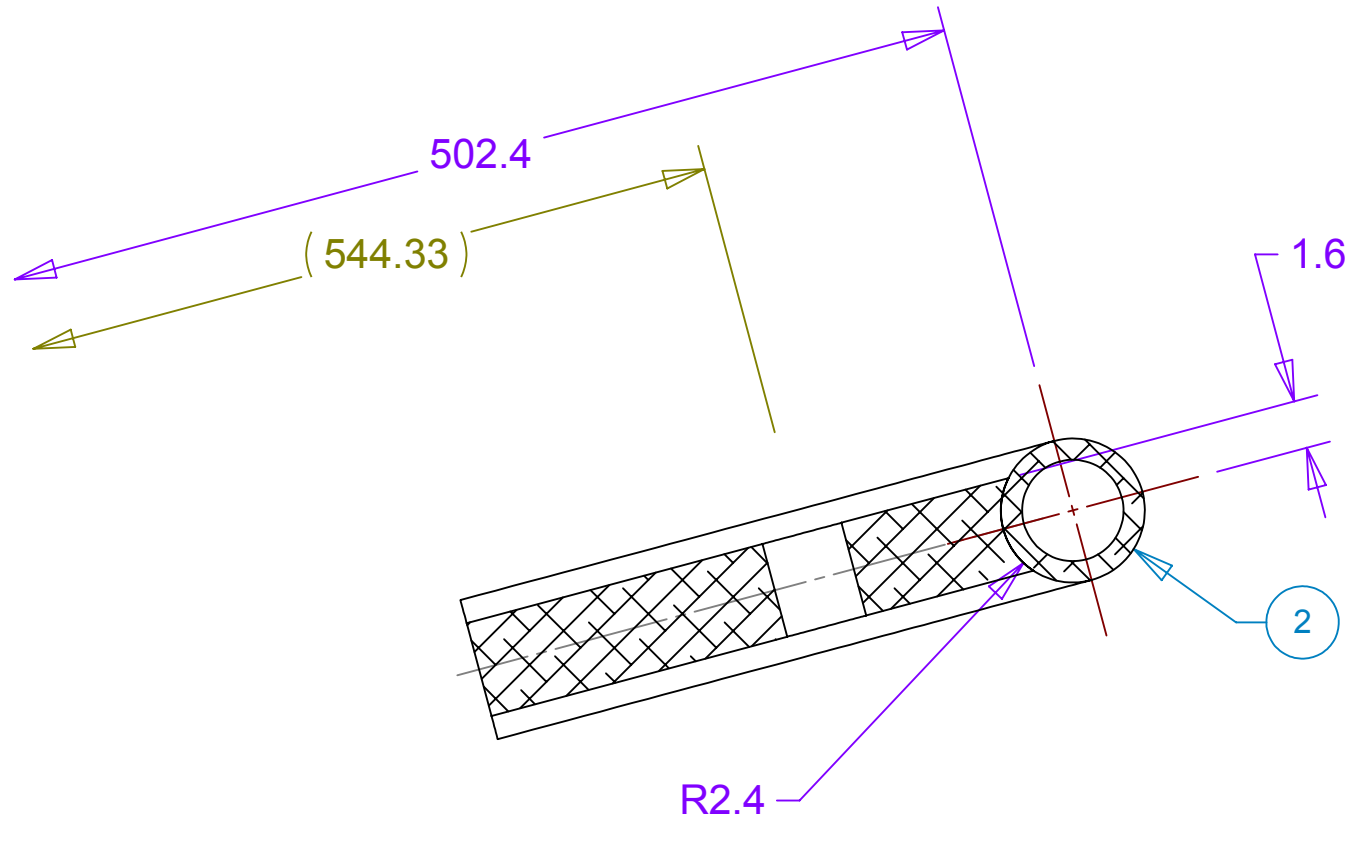
A

A



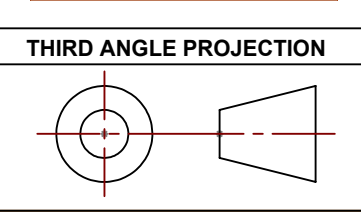
DETAIL A
SCALE 1 : 1
VIEW TYP 2X

4X ϕ 2.71 THRU ALL
6-32 UNC THRU ALL
 ϕ .45 (M) A B (S) C



SECTION B-B
SCALE 4 : 1
VIEW TYP 4X

ALUMINUM TUBE IS DIP-BRAZED TO EDGE OF PLATE



UNLESS OTHERWISE SPECIFIED: DIMENSIONS ARE IN MILLIMETERS -TOLERANCES-		CAD GENERATED DRAWING. DO NOT MANUALLY UPDATE DO NOT SCALE DRAWING		HYTEC, INC	
DECIMALS X = +/- .5 .X = +/- .1 .XX = +/- .01 .XXX = +/- .001	ANGULAR .X = +/- 30' .XX = +/- 15'	SURFACE FINISH = 250			
FINISH		SIGNATURE	DATE	DWG. NO.	SIZE SHEET NO.
		Designer	Roger L. Smith	3/19/2009	111-PHX-02-2203 D 2 of 2
		Drawn	Roger L. Smith	3/19/2009	
		Checked	Walt Sondheim	5/27/2010	
		Engineer	RJ Ponchione	3/19/2009	
PART NO.		Approved	Walt Sondheim	5/27/2010	REVISION
111-PHX-02-2203-1 & 2					SCALE 1:1

THIS DOCUMENT CONTAINS INFORMATION THAT IS THE PROPRIETARY PROPERTY OF HYTEC, INC.
REPRODUCTION, DISCLOSURE, OR RELEASE TO OTHERS, MANUALLY OR ELECTRONICALLY,
IS STRICTLY PROHIBITED WITHOUT THE PRIOR WRITTEN CONSENT OF HYTEC, INC.

8 7 6 5 4 3 2 1